

6' x 4' Wildlife Container Garden

The native desert plants featured in this container garden benefit pollinators such as bees, hummingbirds, and foraging birds.

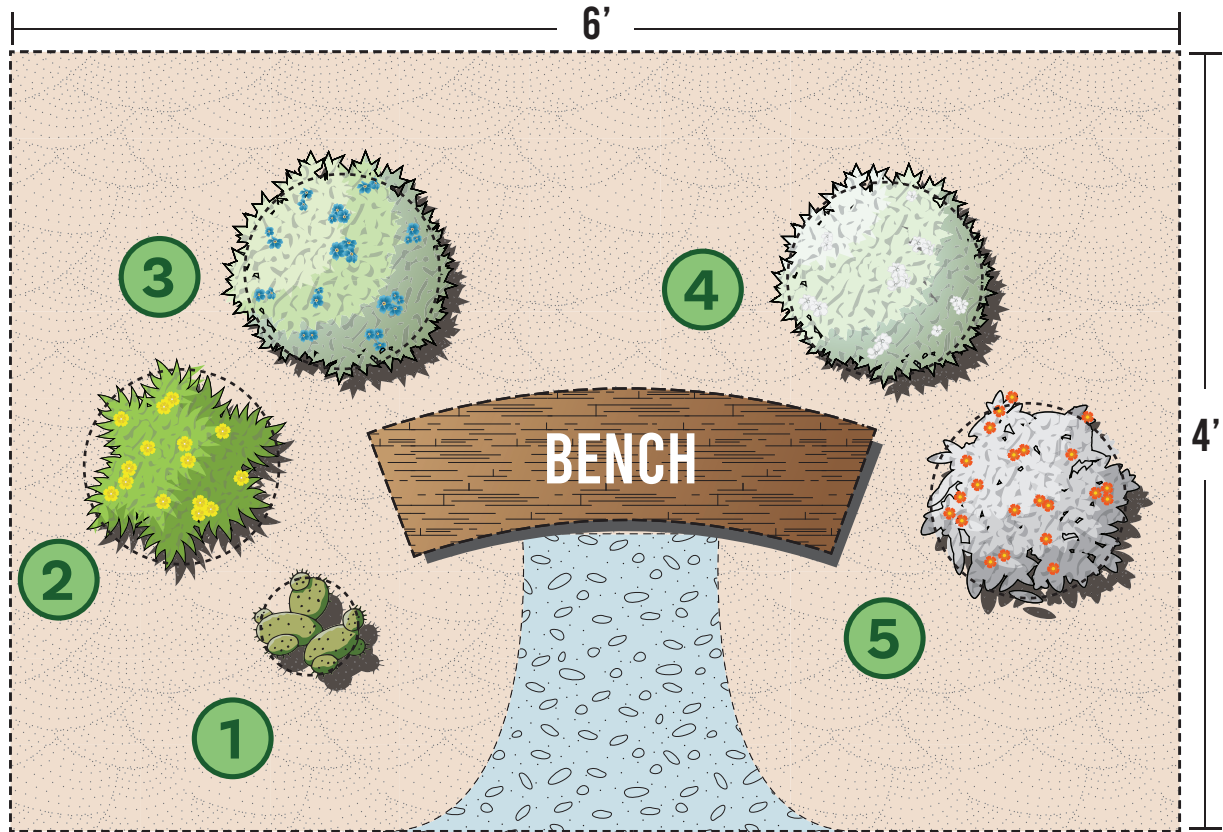
This garden will do best in full sun in the winter. During the summer, move pots to a shadier location.

Using glazed pots helps with water retention and reflecting heat.

Plants kept in pots are not drought tolerant and need to be watered regularly.

Soil: a 3:1 mixture of commercial "Cactus Mix" and perlite provides the best combination of water retention, aeration, and drainage for these potted plants.

Potted plants need to be fertilized regularly because their roots don't have access to soil nutrients in the environment.



- CARE: Low water, full sun
- TYPE: Perennial succulent
- SIZE: 1' tall x 1-3' wide
- BLOOMING SEASON: Spring
- WILDLIFE: Bees



- CARE: Water and part sun
- TYPE: Shrub
- SIZE: 1-3' tall x 1-3' wide
- BLOOMING SEASON: Spring
- WILDLIFE: Bees, hummingbirds



- CARE: Low water, full sun
- TYPE: Shrub
- SIZE: 4-6' tall x 4-6' wide
- BLOOMING SEASON: Spring
- WILDLIFE: Birds, bees



- CARE: Low water, part sun
- TYPE: Shrub
- SIZE: 3-5' tall x 3-5' wide
- BLOOMING SEASON: Winter, spring, summer
- WILDLIFE: Birds, bees, hummingbirds, butterflies



- CARE: Low water, full sun
- TYPE: Shrub
- SIZE: 3-5' tall x 2-4' wide
- BLOOMING SEASON: Winter, spring
- WILDLIFE: Birds, bees, butterflies